



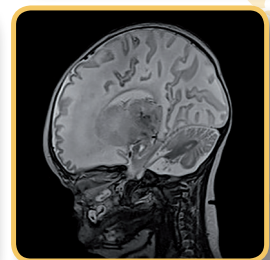
We wish you a start in a  
**healthy life.**



**Our latest  
development**

# 16-channel Head Array Coil 1.5 / 3.0T

- 16-channel Array, cylindrical, receive only coil
- High-resolution MR brain scans of new and premature born babies up to approx. 3 months with head circumference of approx. 42cm
- Perfect for scanning intubated patients
- Improved SNR and image homogeneity: **35% increased SNR** compared to 8-channel Array coil (e.g. Siemens Skyra)
- Extended field of view for head and throat scans: **17% enhanced field of view** compared to 8-channel Array coil
- Approved for use inside **MR Diagnostics Incubator System nomag<sup>®</sup> IC**



Change of technical specification without notice

Courtesy: University Hospital Tübingen, Germany